

Customize your cadett ELSA

cadett ELSA has many advantages. Among the most outstanding is extremely good prerequisites for customizations. No other product on the market can beat cadett ELSA in that race!

To configure and program cadett ELSA to customize the software for your own needs, and thereby save yet more time and money is therefore a golden opportunity that is only waiting to be utilized.

The system is completely open, so it is entirely possible to make customizations like this yourself, but of course knowledge and experience are required, and obviously there is a price-tag associated with the acquirement of that too. A quicker and therefore often cheaper way is therefore to ask the skilful consultants of cadett for assistance. They will make the customizations that you need to be more efficient in your work, at a fixed price or at an hourly rate, according to your preference.

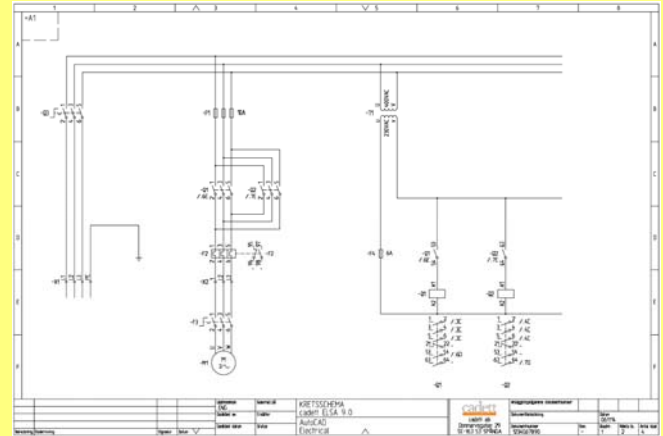
Here we give a few examples of customizations of the described type. How your own needs look like is of course something you know best yourself, but it is still likely that you will be able to find some inspiration among the suggestions here!

Drawing frame according to your own wishes

We make a new drawing frame the way you like it. You may decide yourself about fieldnames and field lengths, the appearance of the frame, the rows and columns and of course how the drawing manager should present the information.

We create a complete new drawing frame including mask, mask file and all other technicalities

that are required. We can also make a script sequence that can replace the drawing frame in an existing documentation, with all texts in the title fields kept intact.



Reports according to your own wishes

We create complete report definitions to create reports according to your specifications. They can use your own drawing frame; have the columns and column headers that you prefer.

POS	POSTBET	ANT	BESKRIVNING	ELEKTROSKA DATA	FABRIKAT	TYPNUMMER	BESTÄLLINGSGRUPP	E-NUMMER	BLADNR	INDEX	ANMÄRKNING
1	-F1	1	Tärlamp	25A Sängp II				151101	11.38	F2001	
2		1	Tärlamp	25A Sängp II				151104	11.38	F2003	
3		3	Tärlamp	25A Sängp II				151102	11.38	F2004	
4	-F2	1	Densitometer 5.5-6A	5.5-6A	Telemecanique	UP-000VDM		320668	11.30	F8005	
5	-F3	1	Antennlydare SMH	8A 7.5W 300V	ABB	SMH	SK3001-AA		11.30	SK002	
6	-F4	1	Centra						11.30	FC003	
7	-H1	1	Tekniskontor	5.2A 300V 2.3kW	ABB	MT	MT 300A W10022-S		11.30	F0001	
8	-G3	1	Elektronisk elskåp	500V 50kVA					11.10	SK001	
9	-G00	1	Kontaktor, 1 pr. 18kVkontakt	300V 50kVA	Telemecanique	LC1-ED09		320616	11.60	F4008	
10		1	18kVkontakt	2 st	Telemecanique	LA1-D00		320702	11.60	F4001	
11	-G01	1	Kontaktor, 1 pr. 18kVkontakt	300V 50kVA	Telemecanique	LC1-ED08		320616	11.70	F4009	
12		1	18kVkontakt	2 st	Telemecanique	LA1-D00		320702	11.70	F4001	
13	-11	1	Styrtransformator	400/220V 320VA	Siemens	AMP2-40-3M			11.50	T0001	
14	-W00	1	Kabel, ledning	09K 400/2.5				081611	11.30	W0001	
15	-K1	4	Kapslingskåp 125, 6pr	4 kV	Telemecanique	AB1-12L5		291282	11.50	F0001	
16	-K2	3	Kapslingskåp 120	2.5 kV	Telemecanique	AB1-V02U		291002	11.30	SK001	
17											
18											
19											
20											
21											
22											
23											
24											
25											
26											
27											
28											
29											
30											
31											
32											
33											
34											
35											
36											
37											
38											
39											
40											
41											
42											
43											
44											
45											
46											
47											
48											
49											
50											
51											
52											
53											
54											
55											
56											
57											
58											
59											
60											
61											
62											
63											
64											
65											
66											
67											
68											
69											
70											
71											
72											
73											
74											
75											
76											
77											
78											
79											
80											
81											
82											
83											
84											
85											
86											
87											
88											
89											
90											
91											
92											
93											
94											
95											
96											
97											
98											
99											
100											

Maybe you want to exclude some of the information that is contained in the standard reports. Maybe you want to add some information.



cadett ab
Girovägen 13
SE-175 62 JÄRFÄLLA
Sweden
Tel: +46 8 754 97 70
Fax: +46 8 754 97 71
www.cadett.com
info@cadett.com

Based on the available information in the databases of cadett ELSA we will create exactly the report definitions that you demand.

User defined information in drawing sheets and reports

Do you think that some information is missing in the symbols of cadett ELSA? Would you like to include information in the reports that is not available in the standard product?

We configure the system for you. Then you will be able to use all attributes that you need. The information in them can be used in the reports.

Connection to Excel

Are you used to work with Excel?

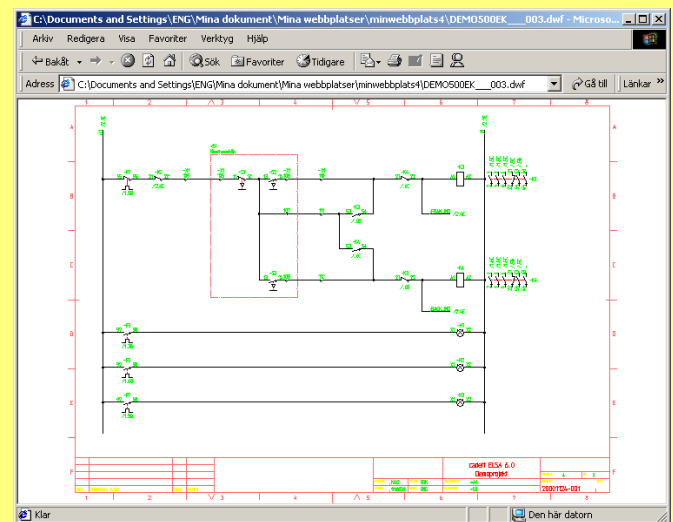
Total Redesign	NEW tot. Redesign	Plant	D	E	F	G	H	I	J
1	=A1+D3-F1	=A1	+D3	-F1	FC001				
2	=A1+D3-F2	=A1	+D3	-F2	FC001				
3	=A1+D3-F3	=A1	+D3	-F3	FB005				
4	=A1+D3-F4	=A1	+D3	-F4	FC004				
5	=A1+D3-F5	=A1	+D3	-F5	FB005				
6	=A1+D3-F6	=A1	+D3	-F6	FC004				
7	=A1+D3-F7	=A1	+D3	-F7	FB004				
8	=A1+D3-F8	=A1	+D3	-F8	FC003				
9	=A1+D3-H1	=A1	+D3	-H1	HM001				
10	=A1+D3-H2	=A1	+D3	-H2	HM001				
11	=A1+D3-H3	=A1	+D3	-H3	HM001				
12	=A1+D3-H4	=A1	+D3	-H4	HM001				
13	=A1+D3-K1	=A1	+D3	-K1	KW038				
14	=A1+D3-K2	=A1	+D3	-K2	KW038				
15	=A1+D3-K3	=A1	+D3	-K3	KW038				
16	=A1+D3-K4	=A1	+D3	-K4	KW038				
17	=A1+D3-Q1	=A1	+D3	-Q1	QA001				
18	=A1+D3-S1	=A1	+D3	-S1	SH001				
19	=A1+D3-T1	=A1	+D3	-T1	TS001				
20	=A1+E1-B1	=A1	+E1	-B1	BD001				
21	=A1+E1-B2	=A1	+E1	-B2	BD002				
22	=A1+E1-M1	=A1	+E1	-M1	MD001				
23	=A1+E1-Q1	=A1	+E1	-Q1	QA002				
24	=A1+E2-B1	=A1	+E2	-B1	BD001				
25	=A1+E2-B2	=A1	+E2	-B2	BD001				

Do you think that it would be neat to transfer the information in *Dynamic OnLine* in cadett ELSA to Excel, just by pressing a button? Would it be useful to be able to edit the information in Excel, and then transfer it back to cadett ELSA so that the drawing sheets are automatically updated with all the changes you have made?

We create the macros in Excel that you need to accomplish all this. We will make them according to your wishes.

WEB presentation of documentation

Would you like to present the documentation that you are creating in cadett ELSA in a WEB format so that anybody can access it with a simple WEB-browser?



Maybe you want to publish the documentation on the Internet or an internal Intranet. Or maybe you want to collect the entire documentation in one single PDF file readable with Adobe Reader?

PDF	Tillverkning	Leverans	Typ	Beskrivning	Placering	Extra info.
<input checked="" type="checkbox"/>	EK_001	EK_001		Motorikretsar	+S1	
<input checked="" type="checkbox"/>	EK_002	EK_002		Manöverikretsar #1	+E45	
<input checked="" type="checkbox"/>	EK_003	EK_003		Manöverikretsar #2	+F5	
<input checked="" type="checkbox"/>	EK_004	EK_004		Skåplayout	+D4	
<input checked="" type="checkbox"/>	TA_001	TA_001		Apparatlista	+D4	
<input checked="" type="checkbox"/>	TA_002	TA_002		Apparatlista	+D4	
<input checked="" type="checkbox"/>	TA_003	TA_003		Apparatlista	+D4	



cadett ab
Girovägen 13
SE-175 62 JÄRFÄLLA
Sweden

Tel: +46 8 754 97 70
Fax: +46 8 754 97 71

www.cadett.com
info@cadett.com

We configure cadett ELSA with the required routines to automatically create HTML pages, DWF files, PDF files or whatever you wish or need.

Macros

Do you often perform the same or similar tasks after one another? Maybe you create the same reports for every project? Maybe you run the same script sequences to plot the drawing sheets each time? Maybe you do the same operations in the drawing manager with collecting and reorganizing each time to create an appropriate table of contents? Would it be comfortable with some neat macros so that you can do all this by pressing a single button instead?

We help you to create the ActiveX macros that you need to simplify your work.

Drawing Aids

Do you miss any commands in the drawing environment? Would you like some new commands to make your work easier?

Our drawing environment programmers create the commands that you like to have!

Interfacing with MPS systems

Do you need to connect cadett ELSA with your MPS system? Maybe you want to have an automatic transfer of article information from the MPS system to cadett ELSA for use in the circuit diagram projects? Maybe you want to be able to send the device lists formatted correctly directly to the MPS system?

We configure the necessary interfaces to make the information transfers as automatic as you want them to be, thus giving you the possibility to fully utilize both cadett ELSA and the MPS system!

Connection to document management systems

Are you using a general document management system in your company? Would you like to integrate cadett ELSA in that system? Does it look hard to solve the issue of revisions and multipage circuit diagrams?

We have solutions to these tricky issues and will provide you with the connections that are needed to integrate the different system with each other.

PLC

Do you start with I/O lists when you create your documentation? Would you like to generate the base of your circuit diagrams with in- and outputs, terminals, circuits etc. directly from these I/O lists?

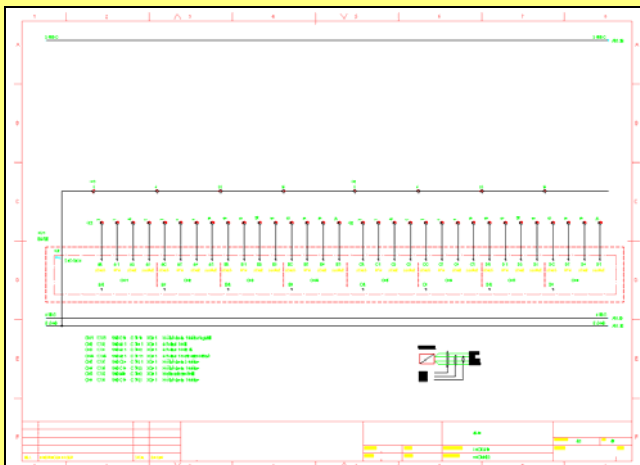
STYRVEL	FÖRSKETT	VSTFANG	SKAPUR KKS-1	SKAPUR KKS-2	SÖKKULL	SÄTI	JOEN	NÄFV	TEGUNDU	SÖKRING
A5	X	135	OCCA10	OCMH02	B	5 505-4332	46-D0E11	DI		Mötor ur rektst (pagn 04)
A5	X	136	OCCA10	OCMH02	B	5 505-4332	46-D0E11	DI		Järbröt irrs
A5	X	137	OCCA10	OCMH02	B	5 505-4332	46-D0E11	DI		Ölslaying - ändrslaying i mötorskip
A5	X	138	OCCA10	OCMH02	B	5 505-4332	46-D0E11	DI		Yfrelag - völvöun
A5	X	139	OCCA10	OCMH02	B	5 505-4332	46-D0E11	DI		Juðhöll mötors - öflaying
A5	X	140	OCCA10	OCMH02	B	5 505-4332	46-D0E11	DI		Mötorverð - öflaying
A5	X	141	OCCA10	OCMH02	B	5 505-4332	46-D0E11	DI		Blun i mötorverðsjúk stjirsl
A5	X	142	OCCA10	OCMH02	B	5 505-4332	46-D0E11	DI		Mötorverð handlar ræsing
A5	X	143	OCCA10	OCMH02	B	5 505-4332	46-D0E11	DI		Lágur gastýrst afrofa - völvöun
A5	X	144	OCCA10	OCMH02	B	5 505-4332	46-D0E11	DI		Yfrelst spennis - öflaying
A5	X	145	OCCA10	OCMH02	B	5 505-4332	46-D0E11	DI		Yfrelst spennis - völvöun
A5	X	146	OCCA10	OCMH02	B	5 505-4332	46-D0E11	DI		Merki um karkvatsstöð
A5	X	147	OCCA10	OCMH02	B	5 505-4332	46-D0E11	DI		Seggloki open
A5	X	148	OCCA10	OCMH02	B	5 505-4332	46-D0E11	DI		Stöðla spjaldur
A5	X	149	OCCA10	OCMH02	B	5 505-4332	46-D0E11	DI		Ör rektors (jæðroflustýnsp r op)
A5	X	150	OCCA10	OCMH02	B	5 505-4332	46-D0E11	DI		Yfrelag
A5	X	151	OCCA10	OCMH02	B	5 505-4332	46-D0E11	DI		Lökakur löki
A5	X	152	OCCA10	OCMH02	B	5 505-4332	46-D0E11	DI		Opna löki
A5	X	153	OCCA10	OCMH02	B	5 505-4332	46-D0E11	DI		Lökakur löki
A5	X	154	OCCA10	OCMH02	B	5 505-4332	46-D0E11	DI		Opna löki
A5	Y	1	OCCA10	OCMH02	B	1 505-4532	46-D0E02	DO		Neyðanilitysing
A5	Y	4	OCCA10	OCMH02	B	1 505-4532	46-D0E11	DO		Ræsing mötors
A5	Y	5	OCCA10	OCMH02	B	1 505-4532	46-D0E11	DO		Stöðun mötors
A5	Y	6	OCCA10	OCMH02	B	1 505-4532	46-D0E11	DO		Opna seggloka
A5	Y	7	OCCA10	OCMH02	B	1 505-4532	46-D0E11	DO		Ræsing mötors
A5	Y	8	OCCA10	OCMH02	B	1 505-4532	46-D0E11	DO		Stöðun mötors
A5	Y	10	OCCA10	OCMH02	B	1 505-4532	46-D0E11	DO		Alfa stöðustöð XR14
A5	Y	11	OCCA10	OCMH02	B	1 505-4532	46-D0E11	DO		Alfa stöðustöð XR15
A5	Y	12	OCCA10	OCMH02	B	1 505-4532	46-D0E11	DO		Ræsing mötors
A5	Y	13	OCCA10	OCMH02	B	1 505-4532	46-D0E11	DO		Stöðun mötors



cadett ab
Girovägen 13
SE-175 62 JÄRFÄLLA
Sweden

Tel: +46 8 754 97 70
Fax: +46 8 754 97 71

www.cadett.com
info@cadett.com



We will create the macros that will do the work for you!

Automation solutions

Does it sound like a dream to be able to automatically generate complete electrical documentations from a general set of rules? In cadett ELSA the basic technology that is needed to do that is included. cadett has developed a standard product – cadett ELSA Automation module – that is the base of solutions that will make it possible to create a complete documentation with no human involvement at all. The possibilities are enormous!

Other wishes

Above we have given a few examples of assignments that we can handle. These examples come from customizations that we often make for our customers.



cadett ab
Girovägen 13
SE-175 62 JÄRFÄLLA
Sweden

Tel: +46 8 754 97 70
Fax: +46 8 754 97 71

www.cadett.com
info@cadett.com